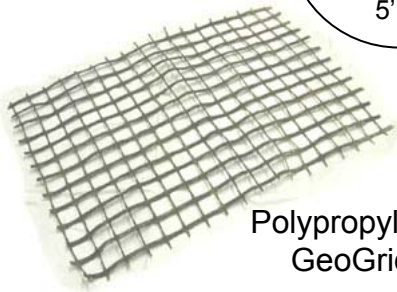


**Flexamat<sup>®</sup>** is a tied concrete block mat, used to control erosion along roadsides, in swales or ditches, slopes of highways, roads, or any area where soil sediment can be moved by water runoff.



5" x 2"



Polypropylene  
GeoGrid



# Flexamat

The  
Most Flexible  
Erosion  
Prevention  
Solution



## Flexamat<sup>®</sup>

available exclusively from

**Motz Enterprises, Inc**

3330 East Kemper Road

Cincinnati, Ohio 45241

Phone: (513)772-6689

Fax: (513)772-6690

E-Mail: [info@flexamat.com](mailto:info@flexamat.com)



[www.flexamat.com](http://www.flexamat.com)

# Flexamat

**Flexamat<sup>®</sup>** starts with round shapes two-inches thick by 4 ¾-inches to 5-inches in length.

The concrete shapes are tied together with a high strength Geogrid, which is comprised of Polypropylene yarns crafted into a stable interlocking pattern and then coated for protection from installation damage.

This product results in the geogrid and the concrete becoming a high strength flexible hard armor against erosion, while allowing grass to become established in the tied concrete block mat.

*More detailed specifications available on our website*

## **Weight per Square Foot**

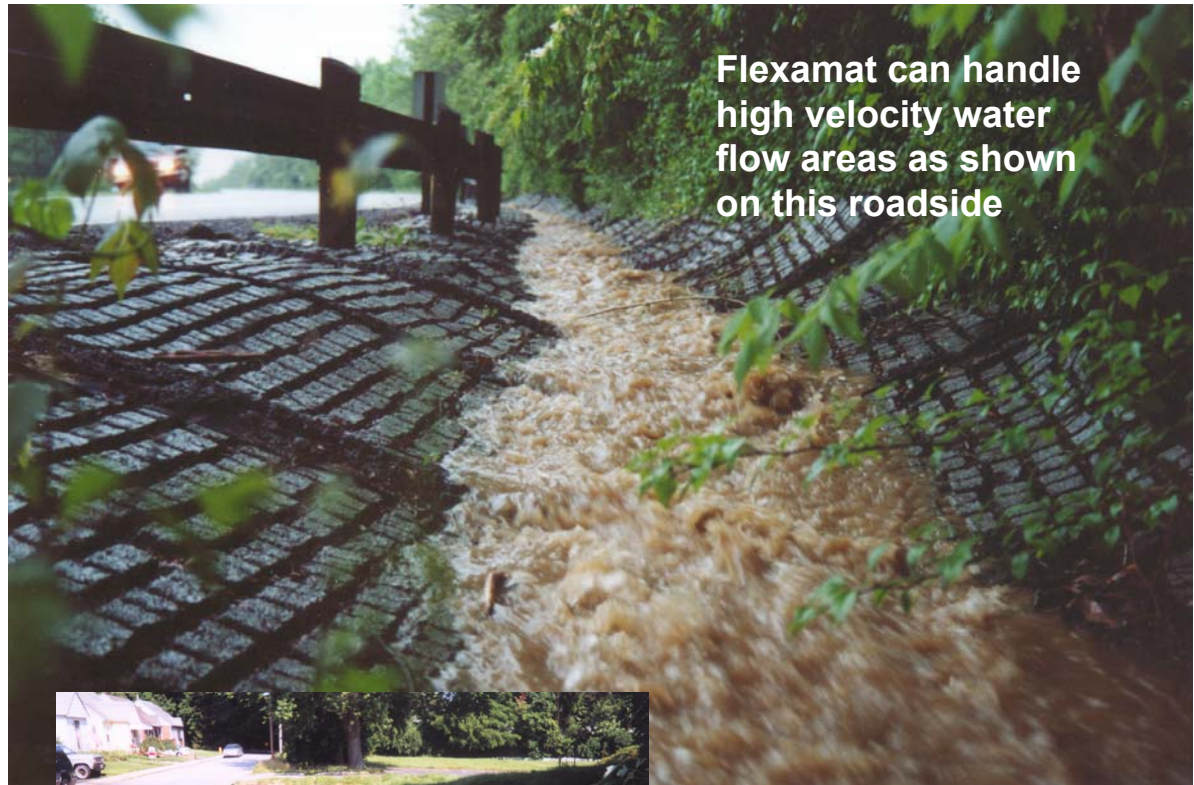
10-11 lbs. per Sq. Ft.

## **Width of Flexamat<sup>®</sup>**

5-foot standard width

## **Length of Flexamat<sup>®</sup>**

35-foot to 100-foot rolls



**Flexamat can handle high velocity water flow areas as shown on this roadside**



Environmentally friendly



Flexamat can be rolled out across your most problematic areas

**ODOT  
APPROVED**

More details available on our website [www.flexamat.com](http://www.flexamat.com)